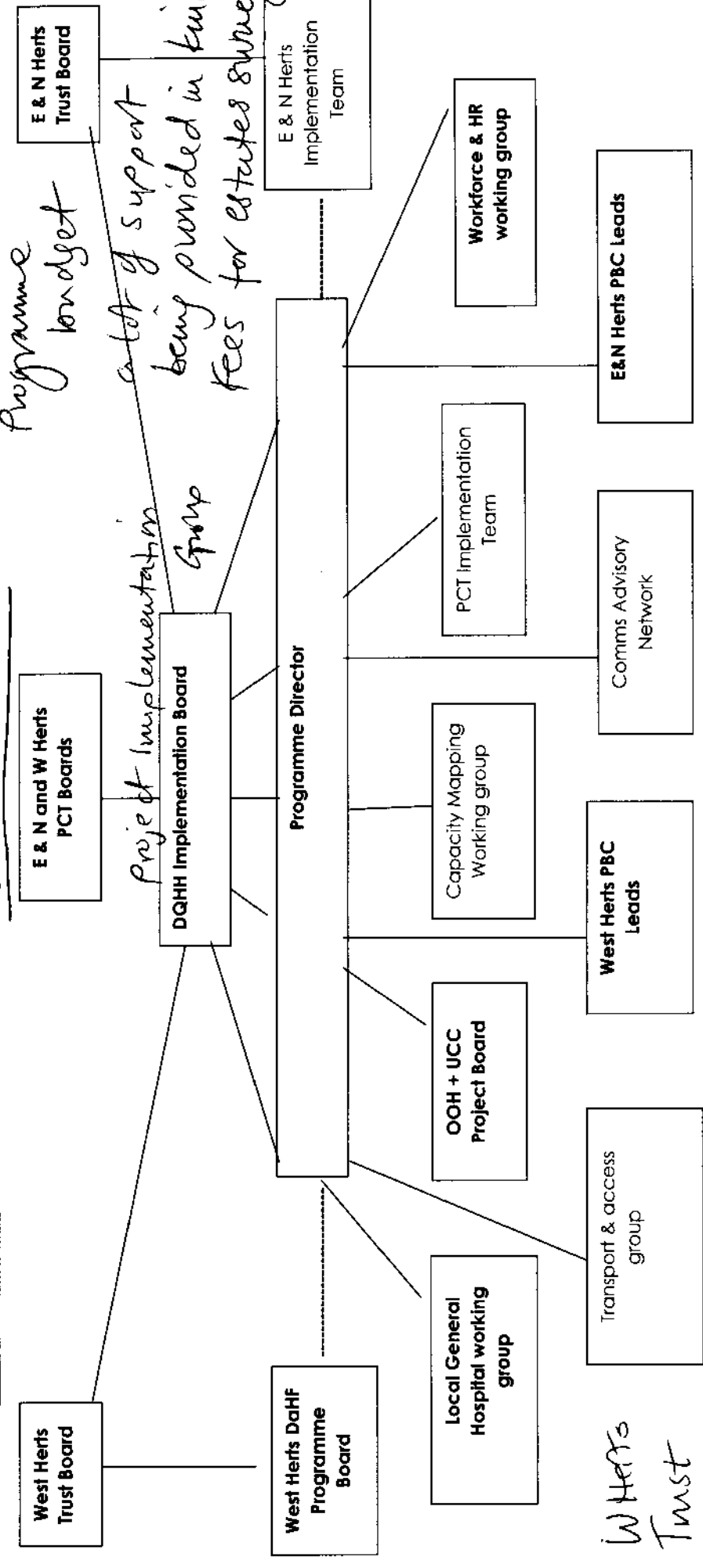


Key:
 — represents direct accountability
 - - - represents monitoring & liaison role
Bold represents live

\$700 million
Programme budget
\$400,000 PA

Project Implementation Group
a lot of support being provided in kind fees for estates surveys
Implementation Team
Workforce & HR working group
E & N Herts Implementation Team
Langley etc



W Herts Trust 400 staff

Standing Groups

- Intermediate Care (Joint with HCC)
- Cancer Services
- End of Life Strategy
- Investing in Mental Health